



SPONSORSHIP OPPORTUNITIES

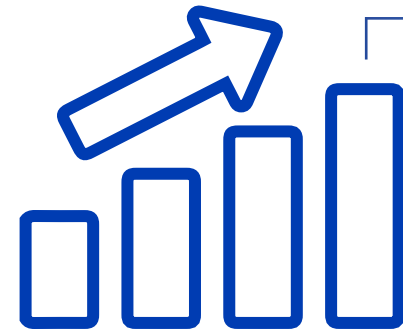
The plastics revolution

starts here.

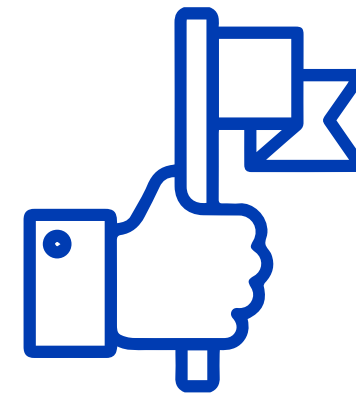
WHY SPONSOR AT PLASTIMAGEN® MEXICO?



Maximize
your brand's
visibility and reach.



Generate
quality leads and
expand your network.



Establish
your position as a
leader in the industry.

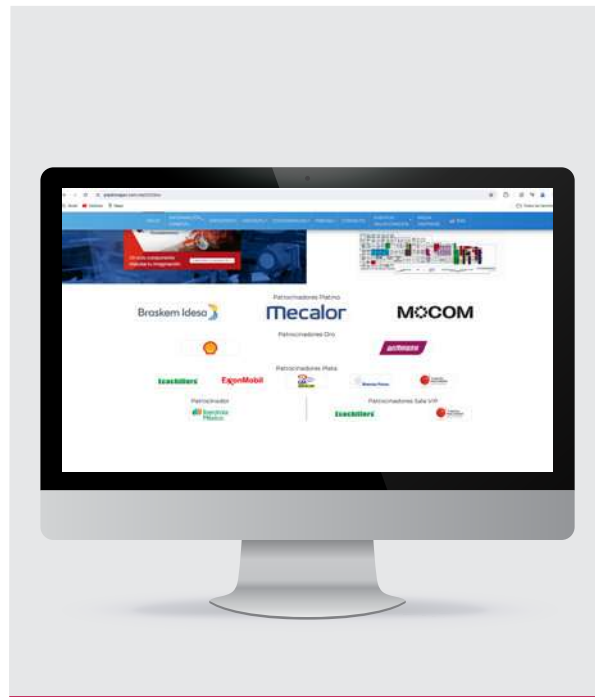


Capitalize
on exclusive marketing
opportunities to stand out.

SPONSORSHIP PACKAGES



Event Website



Logo displayed on the event homepage.

Online Registration and Confirmation



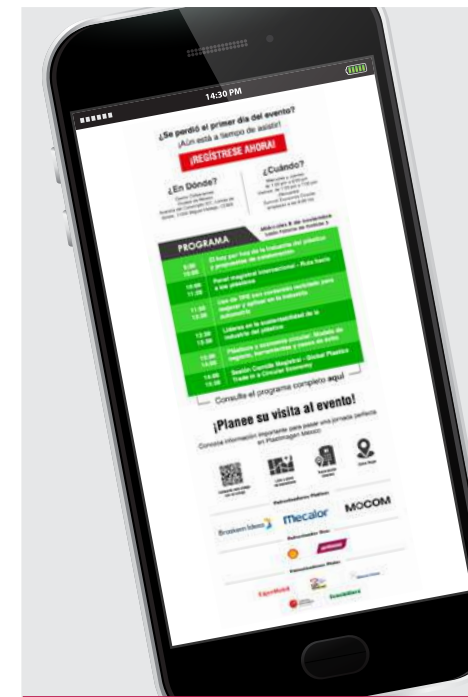
Logo featured on registration page and electronic confirmations.

Print and Digital Media



Logo included in all printed and digital materials, showcasing your sponsorship level.

3 Email Blasts through Plastimagen® HUB



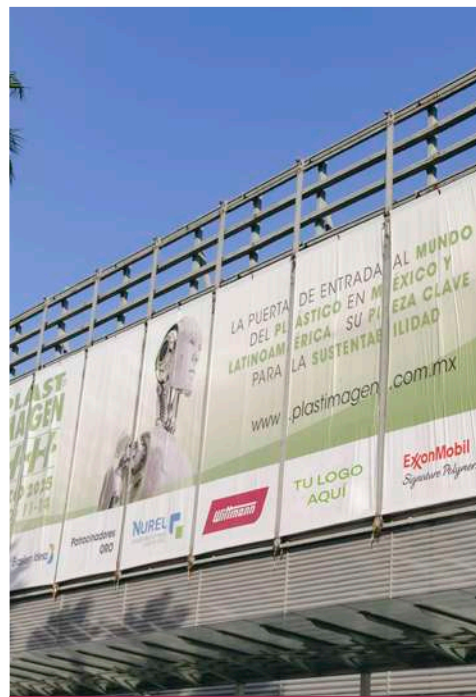
Sent to 1,000 targeted contacts from Plastimagen®'s database. **Banners and texts by the client.**

6 Posts on LinkedIn, Facebook, and X



Promote your participation across LinkedIn, Facebook, and X. **Content design provided by the client.**

**Outdoor
Billboard**



Logo displayed on a shared banner on the façade of Centro Banamex.

**10 Hallway
Banners**



Double-sided matte banners featuring your logo on one side of each.

**4 Column
Logos**



Logo on two-sided banners placed on concourse columns.

**Concourse Screen
at Hall D**



Logo featured on the concourse screen at the entrance of Hall D.

**Exhibit
Floor Plan**



Logo placed on the exhibit floor plan in the concourse.

Entrance
Arches



Logo on the entrance arches of halls A, B, C, and D.

Exhibitor
Directory



- Logo in your company's information section.
- Logo in the "Sponsor Acknowledgements" section.
- Full-page advertisement.

Conference
Program



- Logo on the presentation screens.
- 40-second institutional video played at the start of the Summit.

Press
Conference



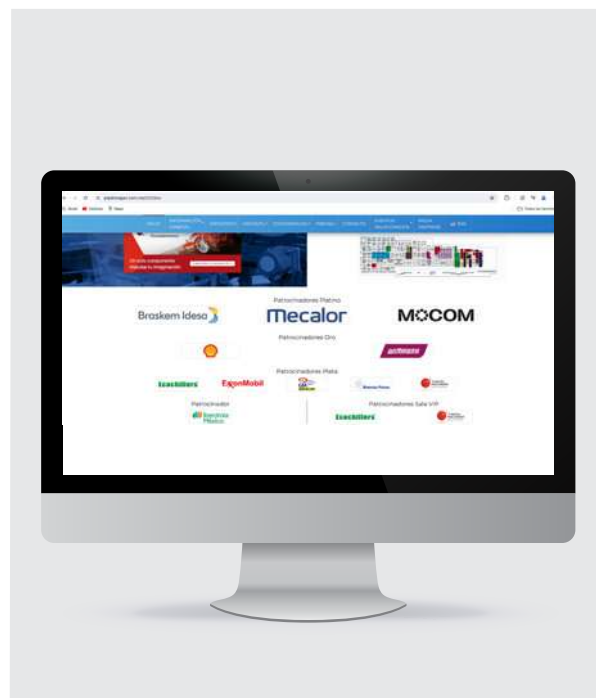
Logo on the press conference backdrop.

Recap
Video



Logo featured in the event recap video.

Event Website



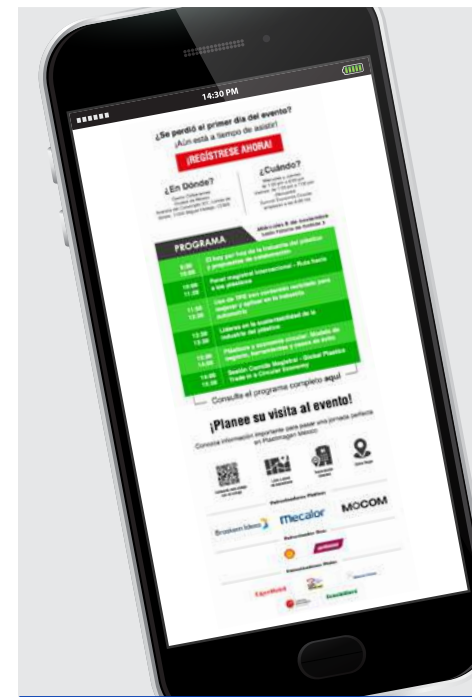
Logo displayed on the event homepage.

Print and Digital Media



Logo included in all printed and digital materials, showcasing your sponsorship level.

2 Email Blasts through Plastimagen® HUB



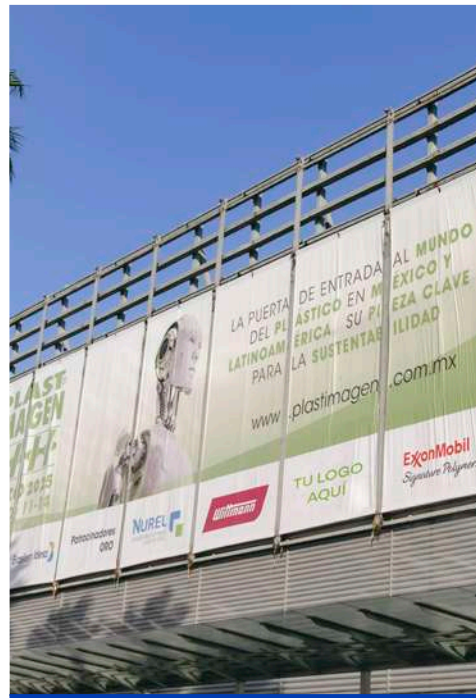
Sent to 1,000 targeted contacts from Plastimagen®'s database. **Banners and texts by the client.**

3 Posts on LinkedIn, Facebook, and X



Promote your participation across LinkedIn, Facebook, and X. **Content design provided by the client.**

**Outdoor
Billboard**



Logo displayed on a shared banner on the façade of Centro Banamex.

**6 Hallway
Banners**



Double-sided matte banners featuring your logo on one side of each.

**2 Column
Logos**



Logo on two-sided banners placed on concourse columns.

**Concourse Screen
at Hall D**



Logo featured on the concourse screen at the entrance of Hall D.

**Exhibit
Floor Plan**



Logo placed on the exhibit floor plan in the concourse.

Entrance
Arches



Logo on the entrance arches of halls A, B, C, and D.

Exhibitor
Directory



- Logo in your company's information section.
- Logo in the "Sponsor Acknowledgements" section.
- Full-page advertisement.

Press
Conference



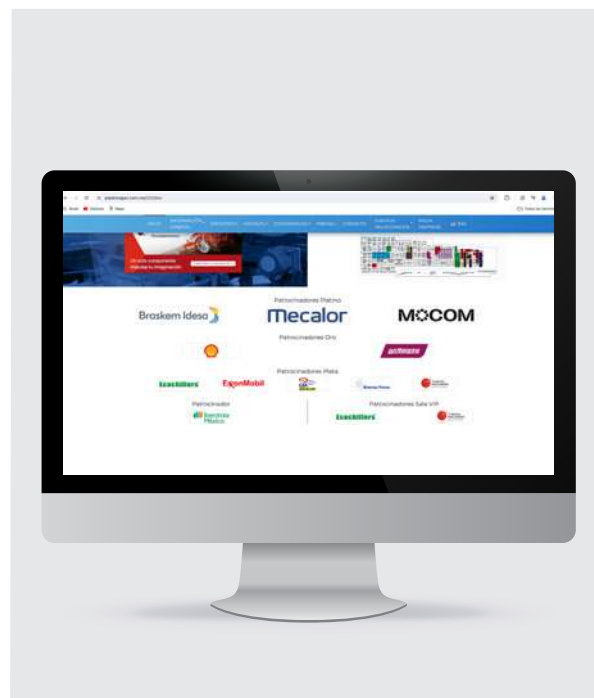
Logo on the press conference backdrop.

Recap
Video



Logo featured in the event recap video.

Event Website



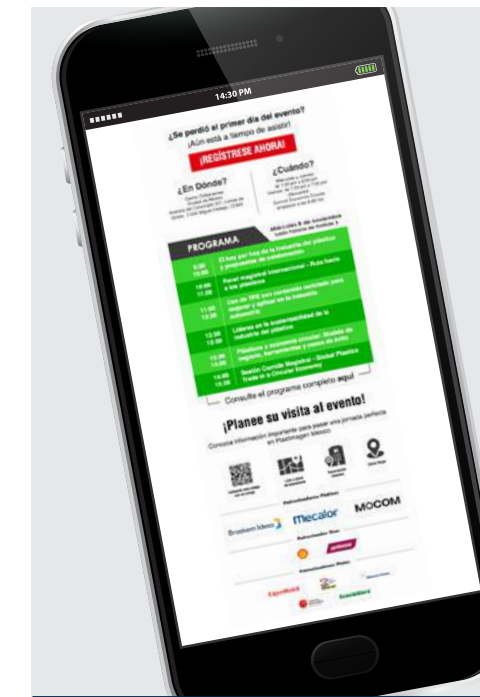
Logo displayed on the event homepage.

Print and Digital Media



Logo included in all printed and digital materials, showcasing your sponsorship level.

1 Email Blast through Plastimagen® HUB



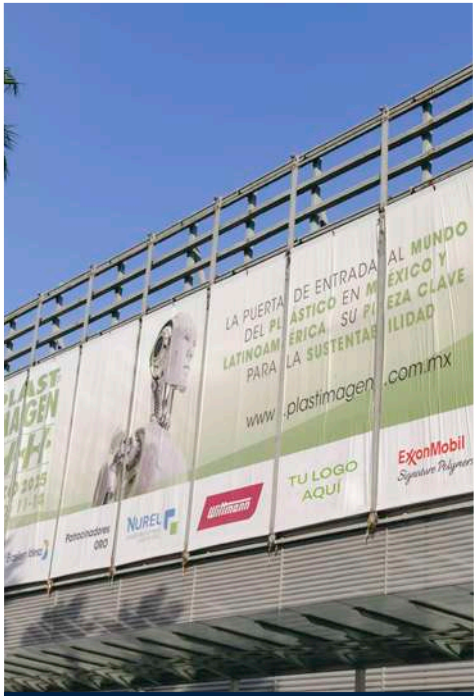
Sent to 1,000 targeted contacts from Plastimagen®'s database. **Banners and texts by the client.**

2 Posts on LinkedIn,
Facebook, and X



Promote your participation across LinkedIn, Facebook, and X. **Content design provided by the client.**

Outdoor
Billboard



Logo displayed on a shared banner on the façade of Centro Banamex.

4 Hallway
Banners



Double-sided matte banners featuring your logo on one side of each.

1 Column
Logos



Logo on two-sided banners placed on concourse columns.

Concourse Screen at Hall D



Logo featured on the concourse screen at the entrance of Hall D.

Exhibit Floor Plan



Logo placed on the exhibit floor plan in the concourse.

Entrance Arches



Logo on the entrance arches of halls A, B, C, and D.

Exhibitor Directory



- Logo in your company's information section.
- Logo in the "Sponsor Acknowledgements" section.
- Full-page advertisement.

GENERAL SPONSORSHIPS



OUTDOOR

MAIN ENTRANCE



Exterior Banner on Façade

2,500 USD

Shared logo.



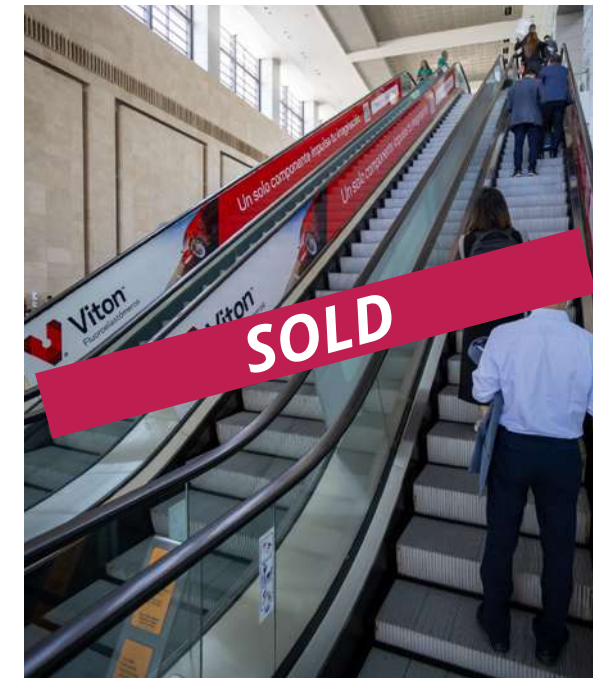
New

Brand Activation, Product Exhibition, Stand Assembly, Volumetric Signs

200 USD per sqm

Space available at the Main Lobby entrance for stands, volumetric signs, self-supporting screens, banners, and similar elements.

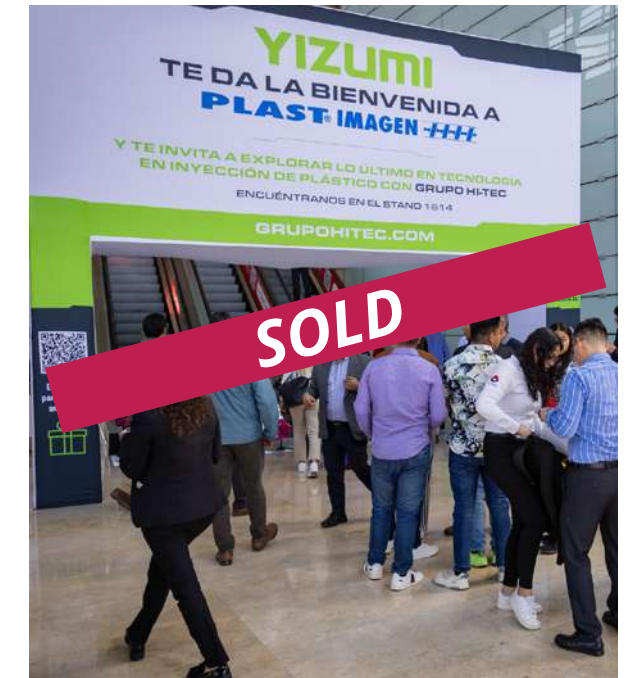
Electricity, internet, security, and assembly services are not included. If required, they will be quoted separately based on the specific elements to be installed. Cost per square meter. From 3 m² the DRO is paid by the client.



Main Entrance Escalators to Centro Banamex (Handrails)

6,000 USD

Branded vinyl on escalator handrails at the Av. Conscripto entrance.
Design provided by the client.



Arch over Main Entrance Escalators to Centro Banamex

7,500 USD

Branded arch facing the glass doors (Av. Conscripto side).
Design provided by the client.

MAIN ENTRANCE



Arch over
Escalators

6,500 USD

Branded arch on escalators from parking to concourse facing the Galeri Restaurant.
Design provided by the client.



Balcony
Canvas - Galeri

1,500 USD

Space to place canvas on the Galeri Restaurant balcony, overlooking the main lobby.
Design provided by the client.



Floor Graphic
Main Lobby

600 USD per sqm

Vinyl placement on the marble floor of the main lobby.
Cost is per square meter. Design and placement area must be approved in advance by the venue. Design provided by the client.

MAIN ENTRANCE



Vinyl Arch Entrance

600 USD

Installation of one vinyl piece on the entrance doors to the Palacio de Iturbide Rooms.
Design provided by the client.

EXHIBITION FLOOR



Hallway Banners

3,500 USD

Logo on 5 banners.



Restrooms Available per hall

1,500 USD

Brand logo on vinyl decals on restroom mirrors.

Available:
Restrooms Hall A
Restrooms Hall B
Restrooms Hall C
Restrooms Hall D

CONCOURSE – ENTRANCE TO EXHIBITION FLOOR



Entrance Arches

2,500 USD

Logo on one of the entrance arches A, B, C, and D.



Entrance Banner

7,000 USD

Banner with your branding at the entrances to halls A, B, and C.
Design provided by the client.

Available:
~~Access Hall A~~
~~Access Hall B~~
~~Access Hall C~~



Column banner

950 USD

Brand logo on a concourse column.

CONCOURSE – ENTRANCE TO EXHIBITION FLOOR



New

Screen Circuit – Shared Areas

4,000 USD

Daily broadcast of a 20-second spot on 38 screens located in the venue’s shared areas. The video will be programmed within the existing loop.
Video provided by the client.



SOLD

Escalator Handrails

1,500 USD

Vinyl branding on the escalator handrails
Design provided by the client.

Available:
~~Hall A~~
~~Hall B~~
~~Hall C D~~



Escalator Arch

8,000 USD

Branded arch at the escalators
Design provided by the client.

Available:
Hall A
Hall B
Hall C

CONCOURSE – ENTRANCE TO EXHIBITION FLOOR



Concourse Window

2,000 USD

Banner with your branding facing the exhibition hall.
Design provided by the client.



Columns

3,000 USD

Columns wrapped in fabric featuring the exhibitor's branding.
Design provided by the client.



Vinyl
on Screen Totems

435 USD

Adhesive vinyl applied to the glass panels below digital totems located in shared areas.
Design provided by the client.

Available: 9 spaces

PARKING



Parking
Barriers

6,500 USD

Exclusive sponsorship.
6 singlesided branded decals
installed on the parking barriers.
Design provided by the client.

New



Parking Light Box
Levels E1 and/or E2

470 USD

Space within a light box on parking levels E1 or E2 for
placement of a translucent advertisement.
Design provided by the client.

PRINTED MATERIALS



Pocketmap

2,500 USD

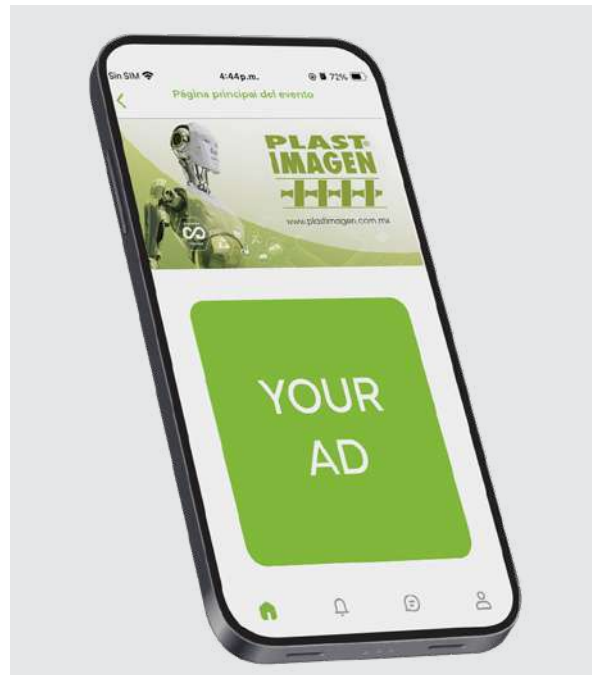
9 ad spaces available on the back of the pocket floor plan.



Exhibitor Directory

Double-page Ad	3,000 USD	Gatefold Cover	7,000 USD
Full-page Ad	1,700 USD	Band in Cover	6,500 USD
Half-page Horizontal Ad	1,000 USD	Logo on the General Floor Plan	200 USD
Inside Front Cover	4,000 USD	Logo on Description	150 USD
Inside Back Cover	5,500 USD		
Back Cover	6,500 USD		

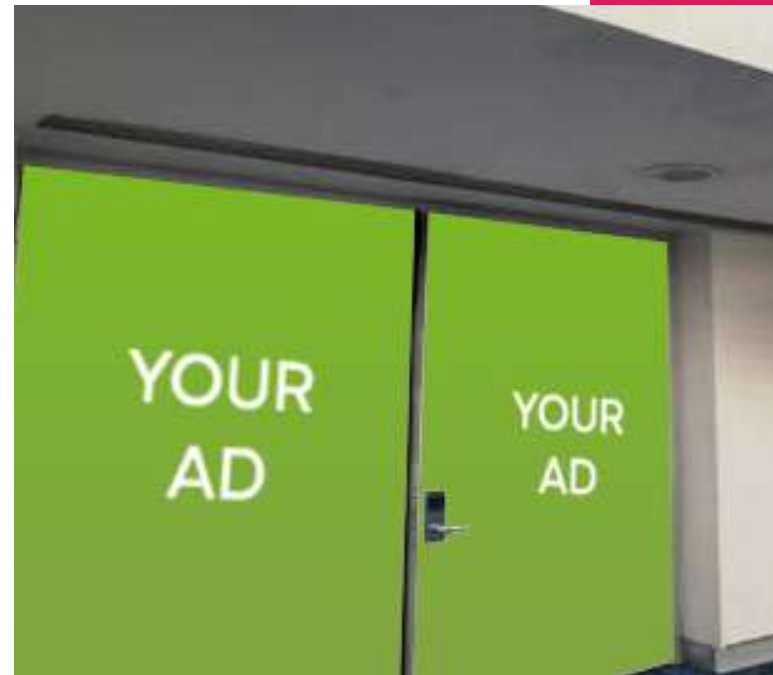
PRODUCTS



Wi-Fi in Halls

2,500 USD

Wifi co-sponsorship in halls, with logo presence on floor graphics and panel (co-branded).



Vinyl on Door – Palacio de la Canal

600 USD

Installation of one vinyl piece on the entrance doors of Palacio de la Canal.
Design provided by the client.



Banner – Infield Tram Column

250 USD

Space on an infield tram column for placement of a double-sided banner. **Design provided by the client.**



Service paper at Galeri Restaurant

3,000 USD

1,000 Individual service paper for exclusive use at Galeri Restaurant, customized with the brand name during the 4 days. **Design provided by the client.**

REGISTRATION



Registration Area

9,000 USD

Exclusive sponsorship. Logo throughout the registration area, with staff wearing branded shirts.



Attendees Badge

8,500 USD

Exclusive sponsorship. Logo on all attendees badges.



Attendees Badge Lanyard

7,000 USD

Exclusive sponsorship. Branded lanyards for attendees badges.



Attendees Bag

6,500 USD

Promotional bags for attendees **(category exclusive)**.
Design provided by the client.

INFIELD 360 SPONSORSHIPS

INFIELD 360, a zone designed for large exhibitions, innovation, content, and networking.



Up to 5 brands

Electronic Media

Access to INFIELD 360

Exhibition Floor Plan

Event Website

Exhibitor Directory



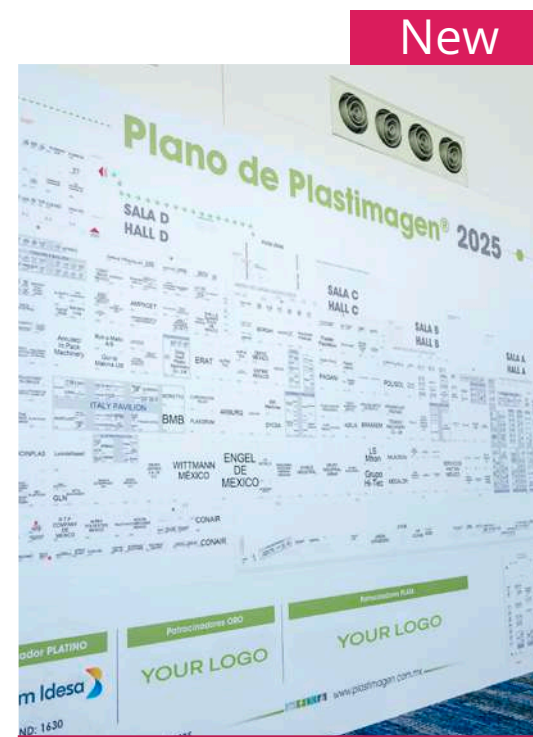
New

Logo on printed and electronic materials identifying the type of sponsorship.



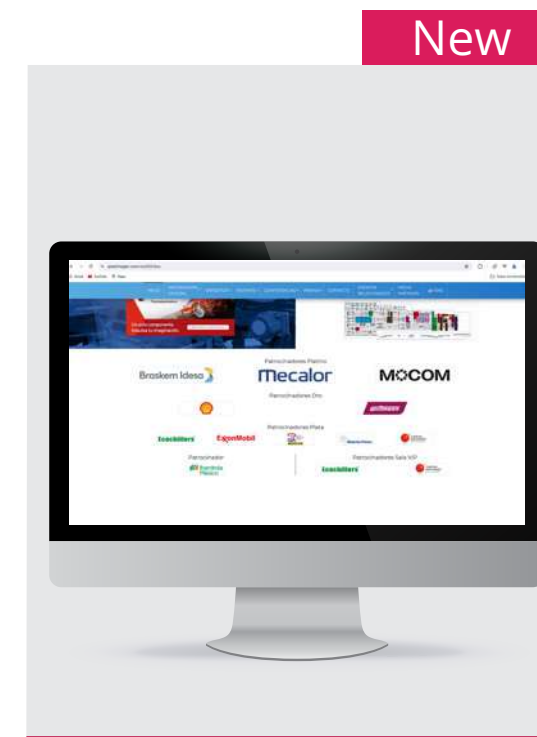
New

Logo on the entrance arch of the Infield.



New

Logo on the exhibition floor plan indicating the Infield.



New

Logo on the homepage section of the event website.



New

- Logo in company information.
- Logo in "Sponsor Acknowledgment."
- 1-page advertisement.

PRODUCTS



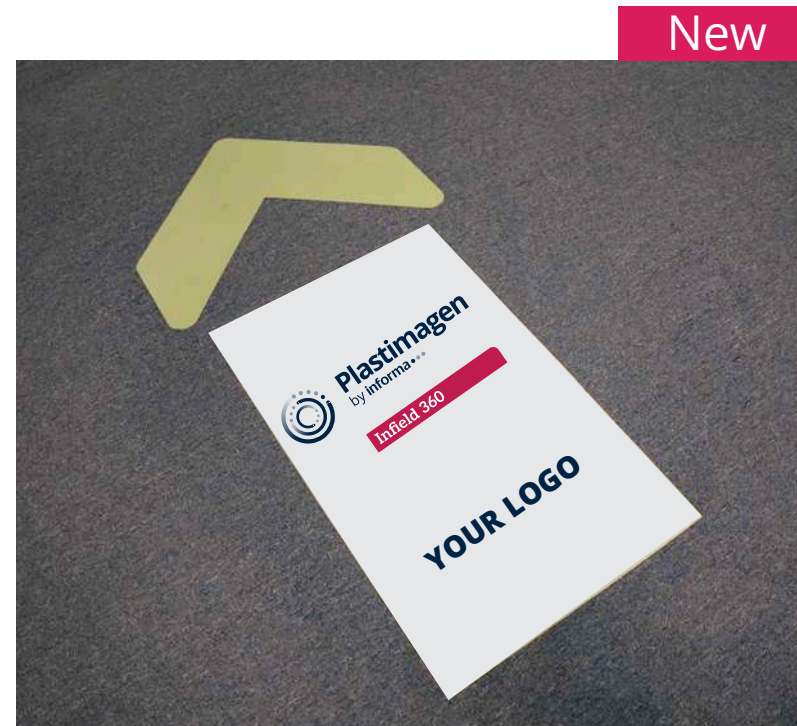
New

After Plastimagen®
Infield Edition

3,500 USD

Branding on the bars at the daily networking cocktail.
Exclusive sponsorship per day.

Available:
November 10
November 11

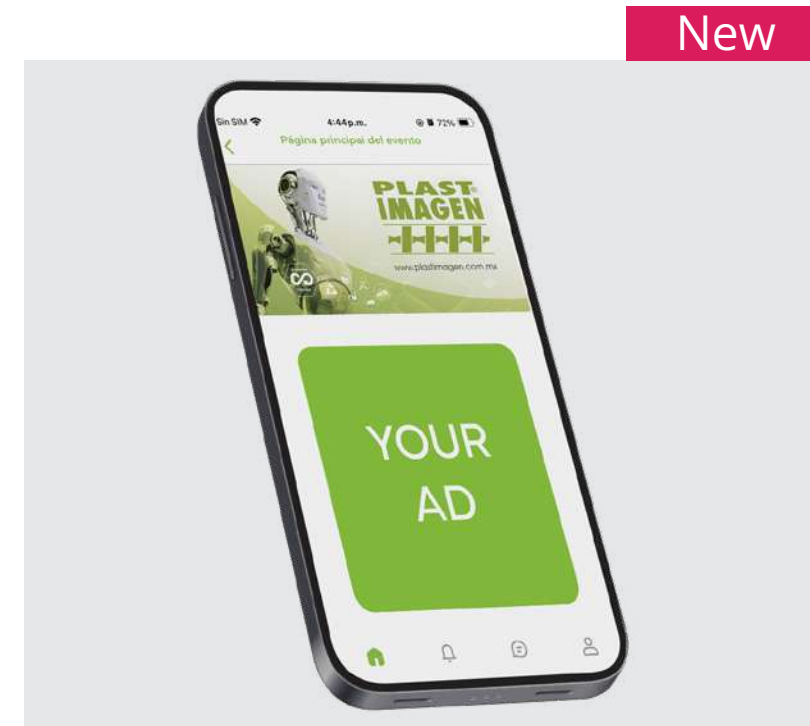


New

Route to the Infield

5,000 USD

Sponsorship of the route with logo placement on directional signage leading to the Infield.



New

WiFi Infield 360

2,500 USD

Sponsorship of WiFi in Infield 360.

PRODUCTS

New



Infield Spot

3,500 USD

Space for content. Visual area with photo opportunity highlighting the sponsor's logo.

New



Entrance Arch

2,500 USD

The entrance arch is the first visual point of contact for visitors entering the area, with the brand logo visible from both directions of circulation.

New



Demonstration Space

1,500 USD

Exclusive area dedicated to live demonstrations. Brand logo visible in the interaction space.

CONTENT SPONSORSHIPS



PRODUCTS



Summit Naming

8,100 USD

Exclusive Sponsorship

- Brand presence across all corporate communications related to the program.
- Logo inclusion in the Summit naming, e.g. "Plastimagen Summit by ...".
- 30-second commercial spot aired during the three days of the Summit.
- Brand presence in the Digital HUB, within the conference section.
- Program signage throughout the exhibition floor.
- Exclusive conference session. *Topic and speaker subject to approval by the organizing committee.*



Keynote Conference

3,200 USD

- Brand presence across all corporate communications related to the program.
- Special mention of the conference within the program's communications.
- 20-second commercial spot aired during the three days of the Summit (between conferences).
- On-screen logo display during the conference.
- Program signage throughout the exhibition floor.
- Brand presence in the Digital HUB, within the conference section.
- Option to distribute promotional materials to visitors and/or gifts to speakers. *Gifts to be provided by the client.*
- Exclusive conference session. *Topic and speaker subject to approval by the organizing committee.*

Availability:
One conference per day.

PRODUCTS

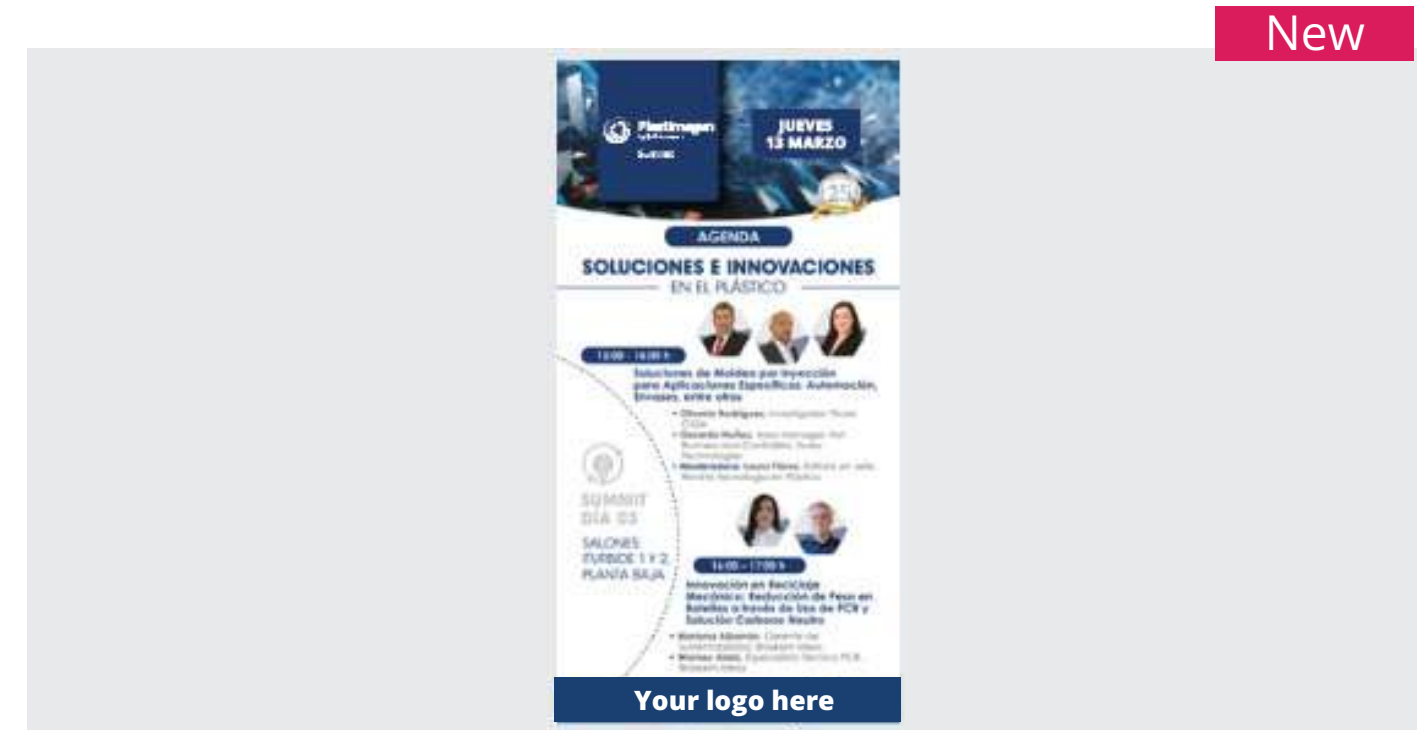


CEO on Panel

2,500 USD

- Brand presence across all corporate communications related to the program.
- 20-second commercial spot aired during the three days of the Summit, between conferences.
- Brand presence in the Digital HUB, within the conference section.
- Logo displayed on screen throughout the three days of the event.
- Program signage throughout the exhibition floor.
- Option to distribute promotional materials to visitors and/or gifts to speakers. *Gifts to be provided by the client.*
- 1 panelist participation. *Subject to approval by the organizing committee.*

Availability:
One conference per day.



Branding Plastimagen® Summit

2,200 USD

- Brand presence across all corporate communications related to the program, from contract signing through agenda publication.
- 20-second commercial spot aired during the three days of the Summit (between conferences).
- Logo displayed on program screens on a daily basis.
- Program signage throughout the exhibition floor.
- Option to distribute promotional materials to visitors and/or gifts to speakers. *Gifts to be provided by the client.*

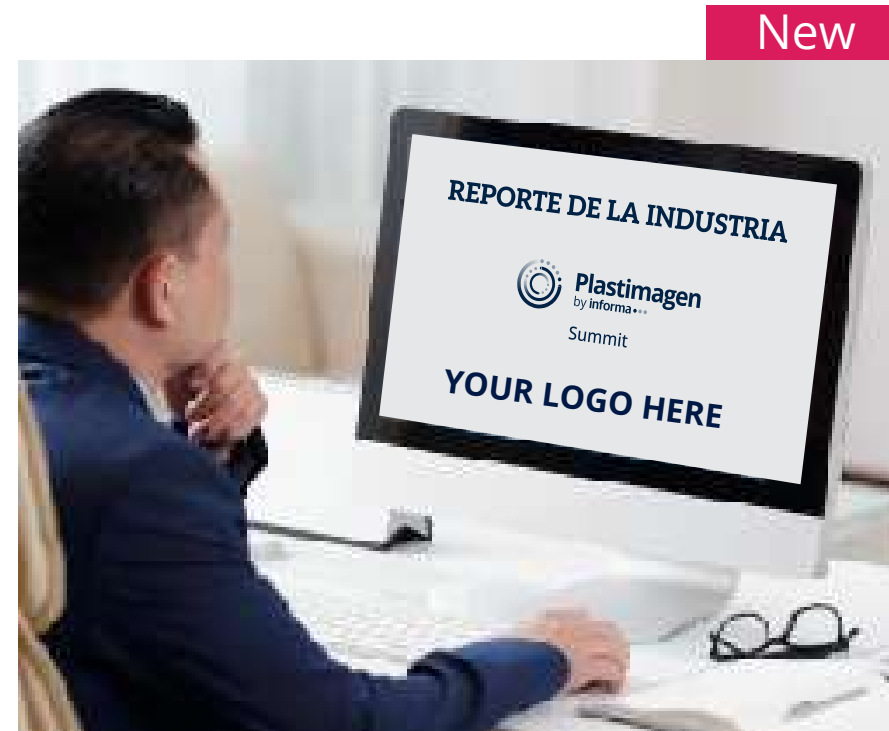
PRODUCTS



STAGE

1,000 USD

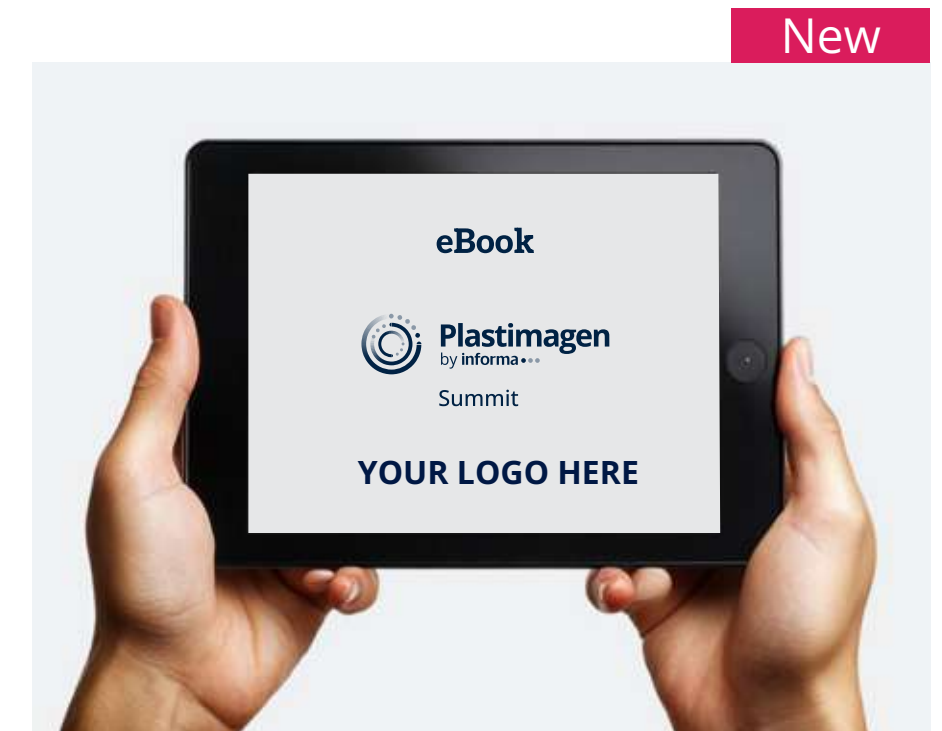
- Space for a 40-minute presentation, including Q&A.
- Auditorium-style room setup for up to 30 attendees, equipped with audiovisual support (screen and microphone).
- Content promotion within the area through the visitor database, social media channels, and specialized campaigns. **Speaker and content to be provided by the client.**



Industry Report

3,000 USD

- Brand presence across all corporate communications related to the report.
- Logo placement on the report cover.
- Inclusion of an interview or article within the report. **Topic to be defined in collaboration with the organizing committee.**
- Dedicated commercial page with redirection to the website selected by the client.



eBook

1,600 USD

- Development of an eBook according to the sponsor's expertise.
- Brand presence in all corporate communication of the eBook.
- Logo on the cover.
- Interview or article within the eBook.
- Commercial page redirecting to the website chosen by the client.

TECHNICAL SPECIFICATIONS



Logo in vectors

Logo

Format: PDF or EPS, in CMYK.
If the file is an image, please send it as a JPG at 300 dpi, in CMYK.



Social Media posts

Copy out to accompany the image.

JPG images, 3 sizes:
FB: 1200 px x 627 px
X: 1024 px x 512 px
LinkedIn: 1200 px x 627 px

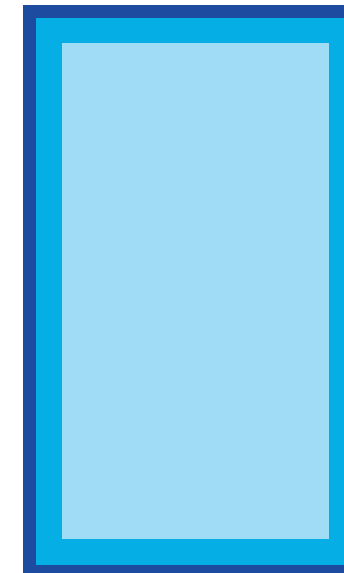


Email blast

Banner: 600 px x 200 px
(horizontal), PNG or JPG.

Email content:

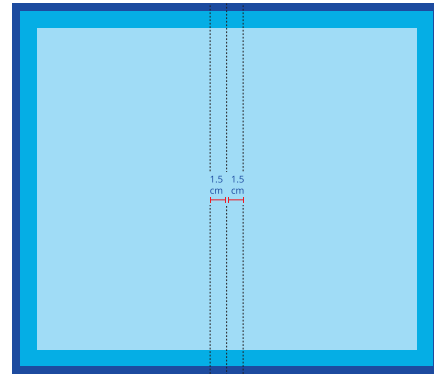
- Text only (NO HTML) from 100 to 120 words.
- Call to action text/button.
- Call to action destination link.



Full-page advertisement.

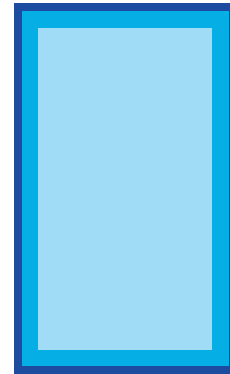
- **Final size: 12.5 cm x 21.5 cm**
- **Bleed: 0.5 cm per side**
- **Texts and logos area: 10.5 cm x 19.5 cm**

<p>Logo</p> <p>Format: PDF or EPS, in CMYK. If the file is an image, please send it as a JPG at 300 dpi, in CMYK.</p>	<p>Main Entrance Escalators to Centro Banamex</p> <p>Size: 0.60 m wide x 14.00 m long.</p>	<p>Arch over Main Entrance Escalators to Centro Banamex</p> <p>Dimensions to be confirmed.</p>	<p>Arch over Escalators</p> <p>Dimensions to be confirmed.</p>	<p>Balcony canvas Galeri</p> <p>Size: 10 m long x 2.40 m high.</p>
<p>Floor Graphic</p> <p>Size: 1 m x 1 m</p>	<p>Arch decals on door frame Palacio de Iturbide</p> <p>Dimensions to be confirmed.</p>	<p>Restrooms</p> <p>Size: 0.40 m wide x 0.15 m high.</p>	<p>Entrance Banner</p> <p>Size: 19 m wide x 2.25 m high.</p>	<p>Concourse Window</p> <p>Size: 4.3 m wide x 6 m high.</p>
<p>Screen circuit in shared areas of the site</p> <p>20-second video, MP4 format in a 16:9 aspect ratio with a maximum size of 1 GB.</p>	<p>Escalator Arch</p> <p>Dimensions to be confirmed.</p>	<p>Escalator Handrails Hall A, B, C-D</p> <p>Size: 6 m long x 0.60 m wide</p>	<p>Columns</p> <p>Size: 3.23 m wide x 2.50 m high.</p>	<p>Vinyl on Screen Totems</p> <p>Size: 1.37 m wide X 1.20 m high.</p>
<p>Parking Barriers</p> <p>Size: 1.60 m wide x 0.25 m high.</p>	<p>Parking light box levels E1 and/or E2.</p> <p>Size: 2.15 m wide x 1.05 m high.</p>	<p>Vinyl in door of Palacio de la Canal.</p> <p>Size: 2.40 m wide x 2.38 m high.</p>	<p>Banner in Tram of infield.</p> <p>Size: 1 m wide x 4 m high.</p>	<p>Service Paper in Galeri Restaurant.</p> <p>Size: 25.4 cm wide x 35.6 cm high.</p>
<p>Pocket map</p> <p>Final size: 22 cm x 15 cm Bleed: 0.5 cm per side PDF or EPS (vector) format or JPG, 300 dpi, CMYK</p>	<p>Attendees Badge</p> <p>Final size: 10.8 cm x 2.2 cm Bleed: 0.5 cm per side PDF or EPS (vector) format or JPG, 300 dpi, CMYK</p>	<div style="background-color: #004a99; color: white; padding: 10px; text-align: center;"> <h2>Images specifications</h2> <ul style="list-style-type: none"> • Images at 25% of actual size at 300 dpi, JPG, AI with text converted to curves. </div>		



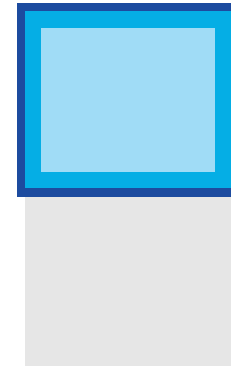
Double-page ad

- Final size: 25 cm x 21.5 cm
- Bleed: 0.5 cm per side
- Texts and logos area: 23 cm x 19.5 cm



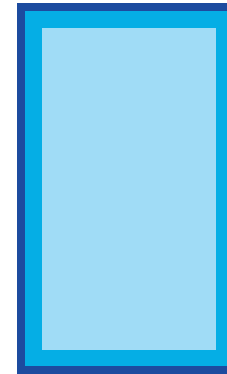
Full-page ad

- Final size: 12.5 cm x 21.5 cm
- Bleed: 0.5 cm per side
- Texts and logos area: 10.5 x 19.5 cm



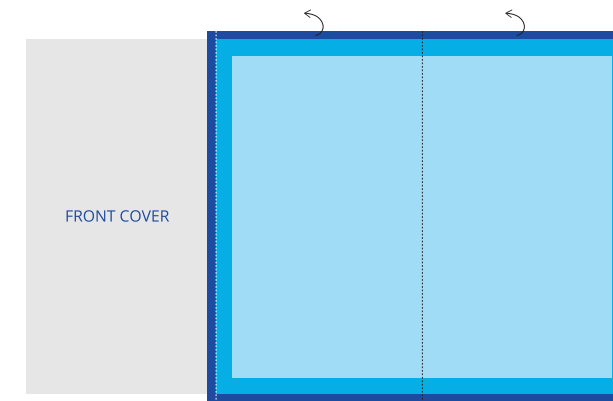
Half-page ad

- Final size: 12.5 cm x 10.7 cm
- Bleed: 0.5 cm per side
- Texts and logos area: 10.5 x 8.7 cm



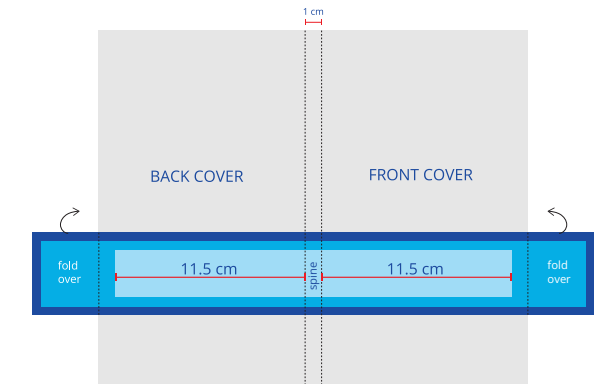
Inside back cover

- Final size: 12.5 cm x 21.5 cm
- Bleed: 0.5 cm per side
- Texts and logos area: 10.5 cm x 19.5 cm



Gatefold cover

- Final size: 22.5 cm x 21.5 cm
- Bleed: 0.5 cm per side
- Texts and logos area: 20.5 cm x 19.5 cm



Band on cover

- Final size: 33 cm x 4 cm
- Bleed: 0.5 cm per side
- Texts and logos area: 24 cm x 2.8 cm

*NOTE: the dotted area is hidden in the spine, avoid placing information or logos in the central part of the double-page spread. It is recommended to set a free margin of 1.5 cm from the center of the ad to the inside.

Ad specifications

Format: PDF or EPS (in vectors) or JPG.
Resolution: 300 dpi
Color: CMYK; If you use pantones, please convert them to their CMYK equivalent.
Black text should be set to this value: C:0 M:0 Y:0 K: 100.

Logo in vectors

Logo

Format: PDF or EPS, in CMYK.
If the file is an image, please send it as a JPG at 300 dpi, in CMYK.



Plastimagen

by informa...

10-13
NOVEMBER
2026
Centro Banamex